

Sheet 1 of 2:
Watchet/St
Decuman's

A good hour probably required to experience a fair sample of the soundpools in Watchet (depending on ice-cream consumption).

EASY
(just watch out for the seagulls!)

1. If not already on your phone, DOWNLOAD 'SATSYMPH QR' from the App Store (iPhone) or Google Play (Android)
2. Push 'SCAN QR' from **within the app** and point your camera at this QR



Watchet

3. The walk will now be in your 'Library'. Go to the start of the walk, click on 'watchet', find and listen to the soundpools, using your screen.

There are soundpools all the way around the harbour

2 soundpools over here, too

Turn on the spot, see what happens!!

The famous Ancient Mariner statue

In Watchet, the soundpools (*the pulsating coloured blobs you can see on your phone screen*) are laid out all along the Esplanade and both 'horns' of the harbour walls.

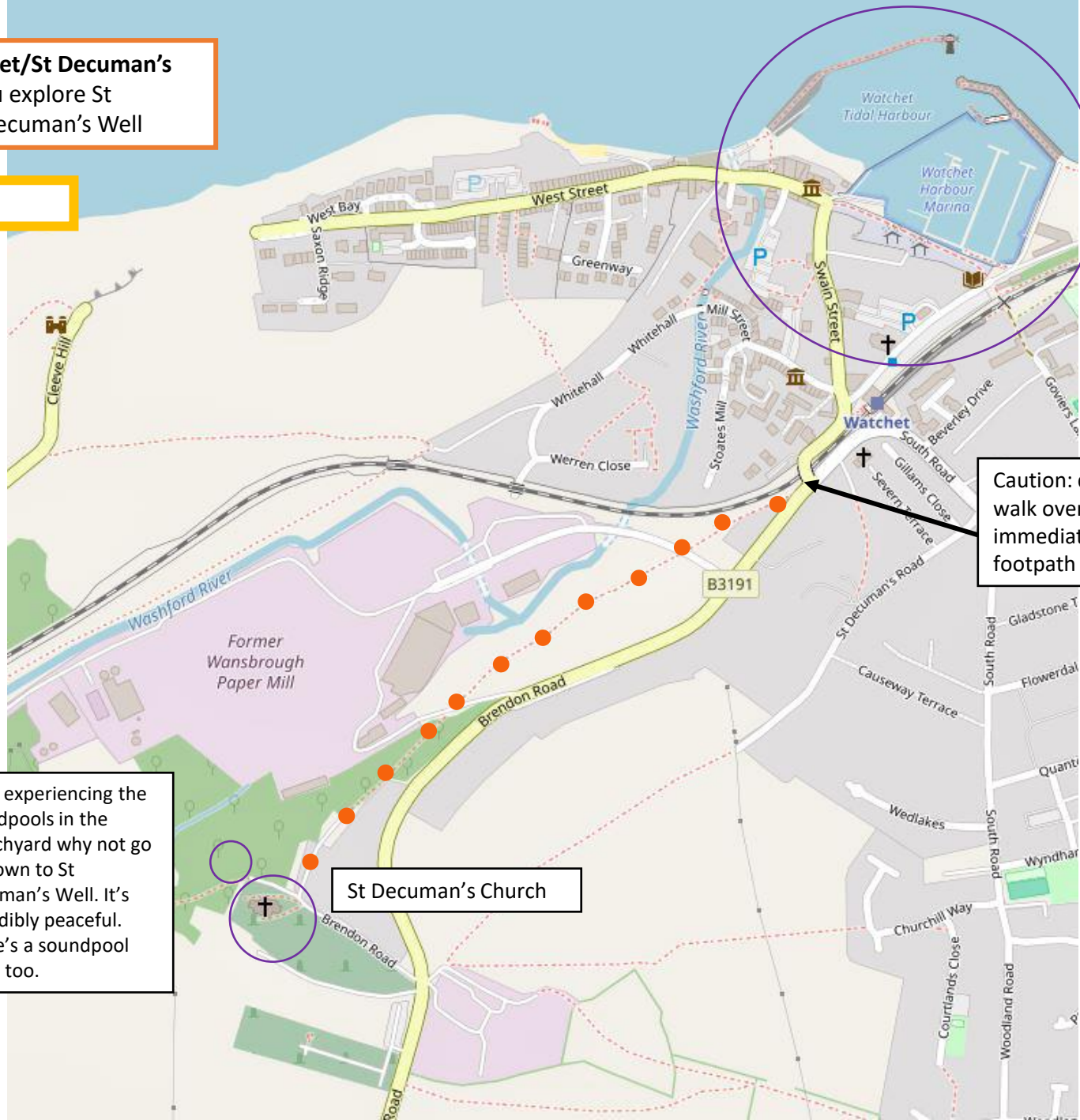
There are 20 of them! Don't forget to go up to Splash Point!

This track behind East Quay Arts alongside the railway can be quite muddy. Steep steps, too!

Caution: trains!

Sheet 2 of 2: Watchet/St Decuman's
1¹/₂hrs, longer if you explore St
Decumans and St Decuman's Well

EASY-PEASY



Caution: dangerous corner –
walk over the bridge, turn
immediately right onto the
footpath

After experiencing the
soundpools in the
churchyard why not go
on down to St
Decuman's Well. It's
incredibly peaceful.
There's a soundpool
here, too.

St Decuman's Church